



# Digitize your restorative workflow

Adding powerful visualizations, advanced digitization and industry-proven restorative capabilities to your growing practice has never been more attainable.



## The iTero Element® Foundation intraoral scanner



Crowns



Bridges



Implant abutments



Veneers



Inlays



Onlays



TimeLapse

Restorative treatments.  
**Visionary care.**

# Streamline your restorative workflow

Elevate your practice beyond what basic STL export scanners can offer with robust restorative capabilities, seamless lab workflows, options for on-demand chairside milling, iTero® TimeLapse technology, and more.

## > Out of the box, your scanner comes ready to:



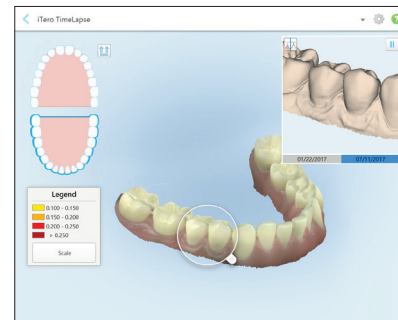
Complete lab workflows with open-export file types



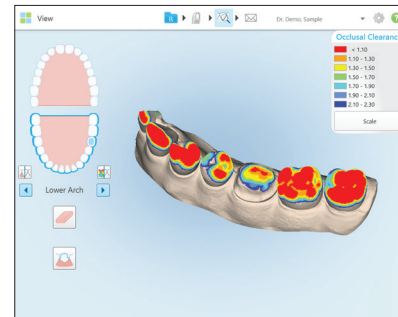
Deliver same-day restorations with chairside milling capabilities



Compare historical scans to current ones with iTero® TimeLapse technology.



TimeLapse technology



Occlusograms

## Easily expand your capabilities

When you're ready to grow your practice even more with Invisalign® treatments, upgrade your iTero Element® Foundation intraoral scanner with the orthodontic package.

The iTero Element Foundation restorative only software package is available on the iTero Element®, iTero Element® 2, or iTero Element Flex® intraoral scanner.

Additional exclusive iTero scanner software options include:

**Invisalign® Outcome Simulator**

**Invisalign® Progress Assessment**

**Vivera Retainers**

Take the first step to digitizing your practice and streamlining your restorative workflow.

> **Learn more about iTero scanners at [iTero.com](https://www.itero.com).**

**iTero®**

©2019 Align Technology, Inc. All Rights Reserved. Invisalign, iTero, iTero Element, the iTero logo, among others, are trademarks and/or service marks of Align Technology, Inc. or one of its subsidiaries or affiliated companies and may be registered in the U.S. and/or other countries. MKT-0003303 REV A