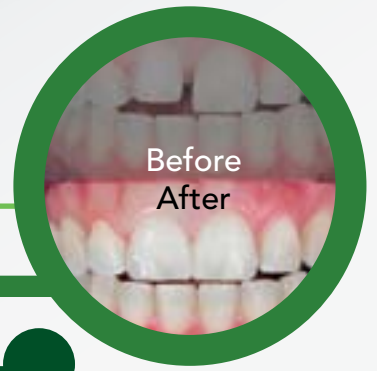




T-Scan[®]

VENEERS



T-Scan[®] data will show you:

- Extreme forces that may chip or dislodge veneers
- Where to adjust to minimize fracture potential
- High-force contact locations to ensure longevity
- Confirmation of anterior guidance and speed of posterior occlusion

T-Scan allows dentists to visually see bite force dynamics and understand how it correlates to esthetic treatment. By providing digital timing and force distribution data across the dentition, computerized occlusal analysis aids the clinician in addressing anterior pitch issues and extreme forces to preserve the longevity of veneers.

Whether working with porcelain or composite resin, T-Scan shows occlusal forces surrounding the veneer to determine whether adjustments are necessary at delivery. This is your ultimate insurance policy to protect your cosmetic work.

“THE DIFFERENCE BETWEEN THE PATIENT SAYING IT FEELS GOOD AND IT FEELS GREAT IS THE DIFFERENCE BETWEEN VENEERS BREAKING IN 9 MONTHS AND THEM LASTING A LIFETIME. WITH THE T-SCAN YOU KNOW THE PATIENT WILL ALWAYS LEAVE YOUR OFFICE SAYING, ‘IT FEELS GREAT!’”

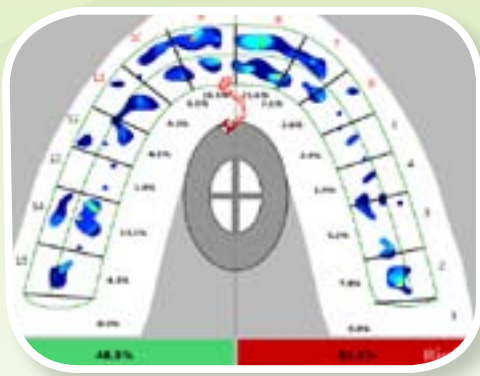
DR. BRUCE BAIRD, DDS

PRESERVE ARTISTRY



Preserve your dental artistry by measuring and adjusting anterior guidance forces across multiple veneers

REDUCE REMAKES



Minimize fracture potential by analyzing excursion points of contact and making adjustments

GAIN PATIENT TRUST



Show your patients:
You can correlate their "feel" to what you're seeing on screen



TO SEE HOW T-SCAN CAN PRESERVE YOUR VENEERS, CONTACT US